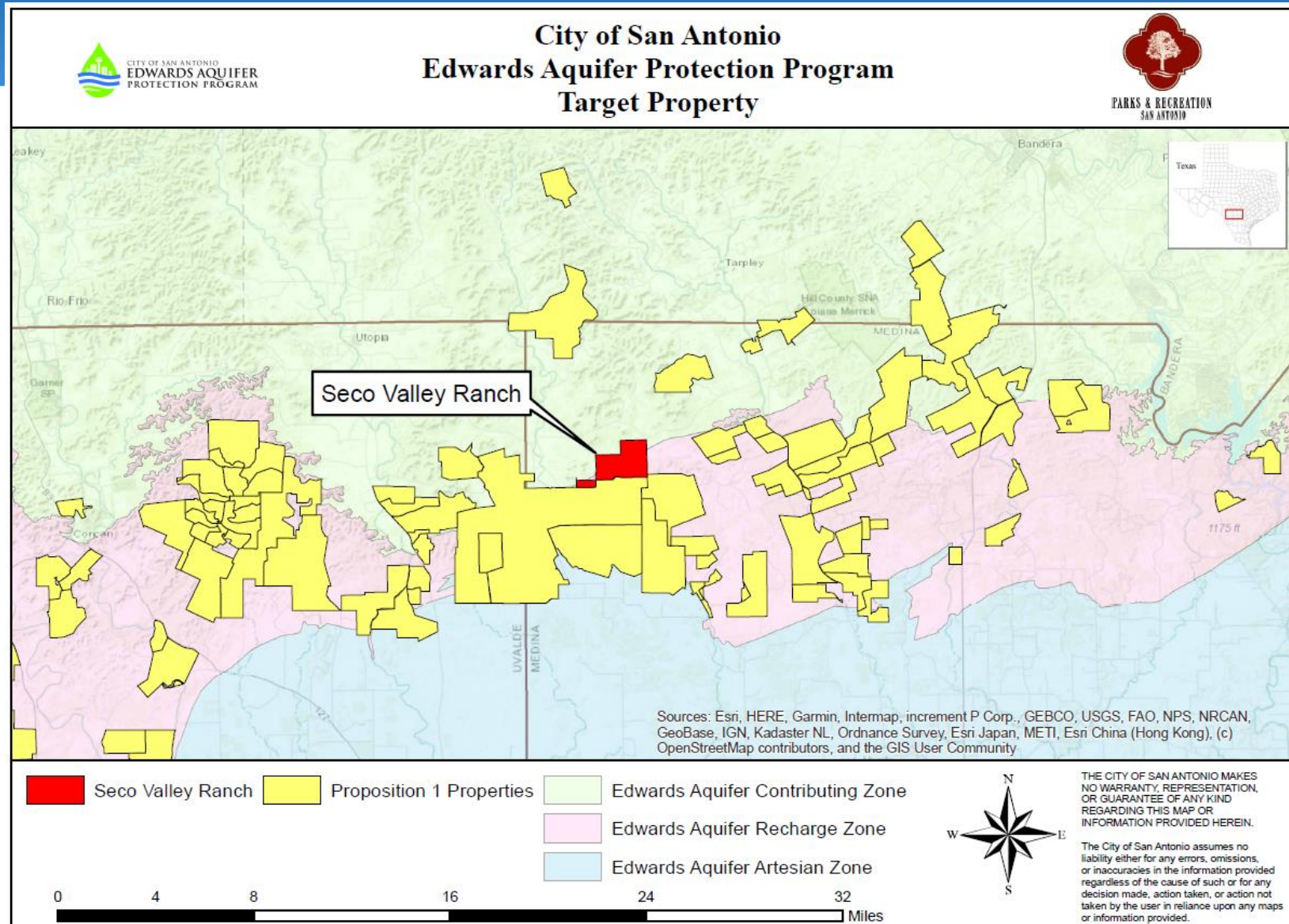




GREEN
SPACES
ALLIANCE
OF SOUTH TEXAS

Seco Valley Ranch
Maverick Springs Ranch

Seco Valley Ranch (~1,800+ Acres) Medina County



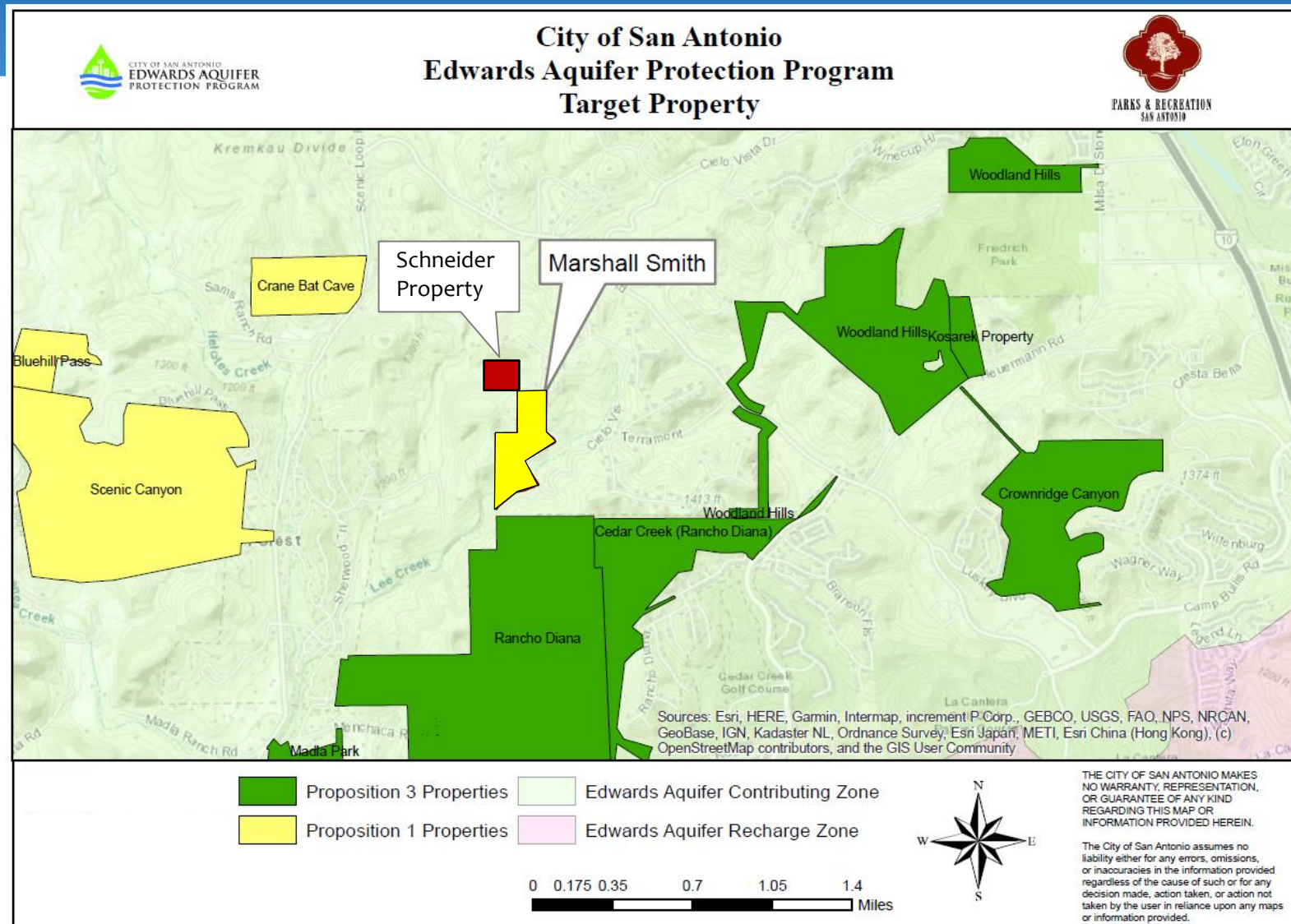


Seco Valley Ranch (~1,800+ Acres) Medina County

- 1,800+ acres located in Recharge and Contributing Zones
- Top 20% of SET Model
- Located north of Record Buck Ranch (Seco Sinkhole) and adjacent to Dillingham Ranch in Seco Creek Watershed
- Contains large sinkhole and cave; numerous karst features on the property
- **Seeking Stage 1 Consideration**

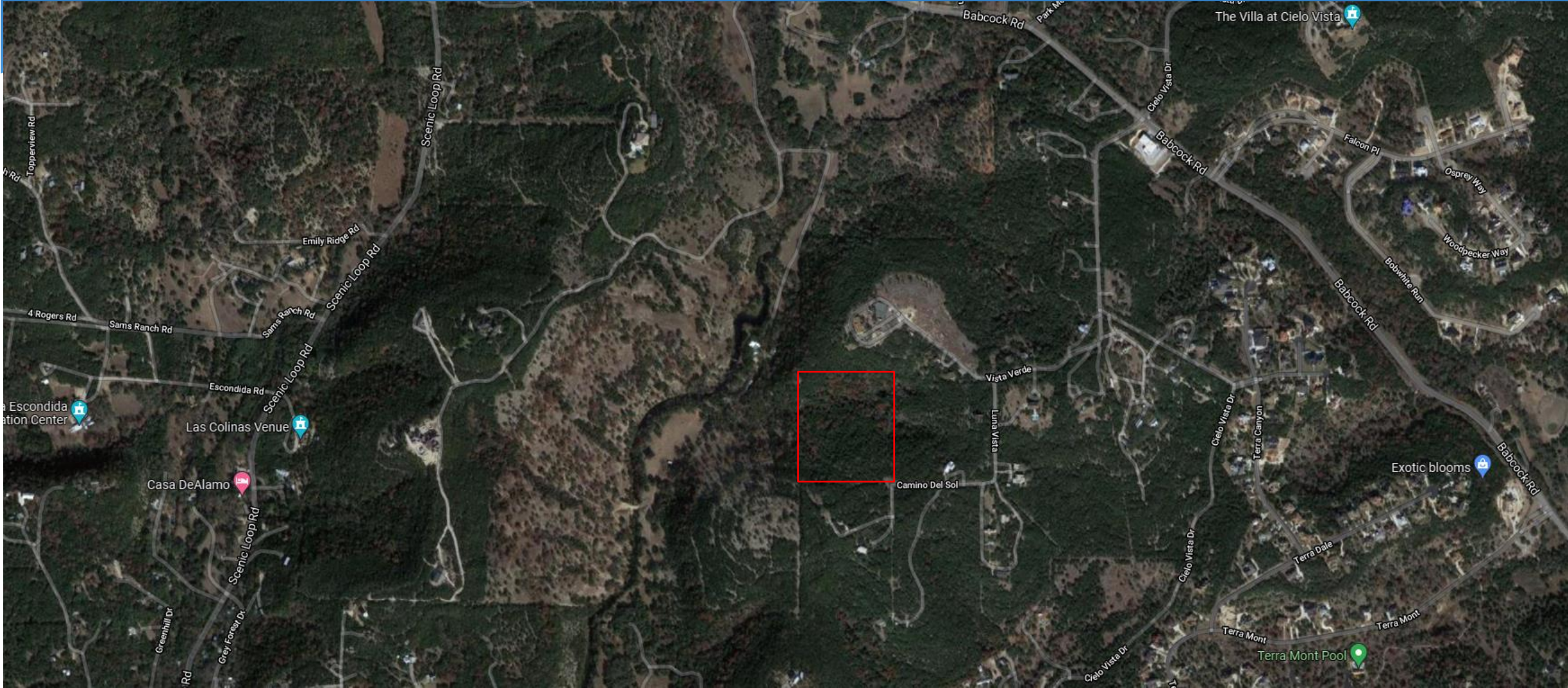


Maverick Springs Ranch/ Schneider Property (~15 Acres) Bexar County





Maverick Springs Ranch/ Schneider Property (~15 Acres) Bexar County





Maverick Springs Ranch/ Schneider Property (~15 Acres) Bexar County

- 15 acres located in Contributing Zone
- Top 10% of SET Model
- Located north of Rancho Diana and across the street from 48- acre Marshall Smith Property protected in 2021
- Contains two (2) documented caves; numerous other karst features on the property
- Appraisal completed; Geological assessment reports moderate water quantity and high water quality benefits
- **Seeking Stage 2 Consideration**





Maverick Springs Ranch/ Schneider Property (~15 Acres) Bexar County

